

SAMANA
IMPERIAL
GARDEN

WHERE PURPOSE SHAPES EVERY SPACE



SAMANA's legacy is rooted in a singular vision - to craft environments that elevate everyday life. Over three decades, we've transformed that vision into a portfolio of communities that stand as benchmarks of design, purpose, and aspiration.

From idea to execution, we pursue progress with intention and purpose, fusing innovation, aesthetic clarity, and community thinking into every development. The result is more than architecture. It's a curation of refined lifestyles that inspire, endure, and lead the way forward.

SAMANA
DEVELOPERS

WHERE COMPLETE CONTROL MEETS TIMELESS QUALITY

SAMANA's end-to-end integration means no detail is outsourced, ensuring absolute control over timelines, costs, and uncompromised luxury.

DESIGN & PLANNING

Visionary concepts engineered for reality.

ENGINEERING & CONSTRUCTION

Structural artistry meets technical brilliance.

PROCUREMENT

Utilizing cutting-edge platforms to streamline sourcing and ensure unmatched consistency.

QUALITY CONTROL

Precision-led systems that track, review, and deliver quality.

CUSTOMER EXPERIENCE

End-to-end service with precision and care.



WHERE THE GARDEN VISION TAKES ROOT

Arjan is where life begins to unfold like a story written just for you, a place where families plant roots in rich, nurturing ground, and every day carries the promise of growth and possibility. Here, the community itself blooms, shaping a rhythm of life that is both serene and inspiring.

Surrounded by iconic treasures like the Miracle Garden and Butterfly Garden, Arjan whispers of beauty and wonder, but its true magic lies in the life it fosters, the dreams it nurtures, and the enduring value it offers those who call it home.





WHERE FLORA FRAMES TOMORROW'S COMMUNITY

Picture a community taking shape around world-renowned gardens, where residential neighborhoods are being thoughtfully planned among green spaces and walking paths.

Where morning walks lead through landscaped corridors and where children grow up with nature as their playground, anchored by the spectacular gardens that already draw visitors from around the world.



YOUR GATEWAY TO DUBAI'S VIBRANT LIFESTYLE

Nestled amidst the city's most vibrant districts, Arjan offers a lifestyle where convenience meets elegance, and every journey, from leisure to work, is effortlessly connected. More than just an address, Arjan is a community in bloom - a place where early residents can embrace a lifestyle of promise, growth, and endless possibilities, making this a rare chance to belong to a neighborhood destined for distinction.



A SYMPHONY OF NATURE AND DESIGN

Introducing SAMANA Imperial Garden

Blooming in the heart of Arjan, SAMANA Imperial Garden stands as a celebration of garden living at its finest. Every detail, from sun-kissed balconies that capture the morning's first light to thoughtfully designed layouts that flow like nature's own design, is lovingly crafted for those who dare to dream of life's most beautiful possibilities.

Far beyond just a residence, SAMANA Imperial Garden is your invitation to live poetry in motion - where every moment nourishes the soul, and your life blossoms in harmony with the beauty around you.



WHERE ARCHITECTURE BECOMES ART

SAMANA Imperial Garden rises with a striking silhouette, a masterpiece of contemporary elegance that honors the botanical wonders that surround it. Sophisticated design blooms with modern grace, while quietly whispering the secrets of timeless beauty. Every sweeping curve and inspired detail transforms your home into a living sculpture, where each moment feels like stepping into a work of art.



SPACES THAT GROW WITH YOU

Life's chapters are ever-changing, and your home can follow. With innovative layouts that adapt effortlessly, each apartment can stretch, shift, and flow - studios can bloom into one-bedroom apartments, one-bedrooms can grow into two, and every change feels effortless - an elegant reflection of a life that knows no limits.



ONE HOME, ENDLESS POSSIBILITIES



Featuring Flexible Homes for Modern Living

Where a studio converts to 1 bedroom, 1 bedroom converts to 2 bedrooms & 2 bedroom converts to 3 bedrooms.

SERENITY IN EVERY RIPPLE

Nestled within lush gardens, your pool is a sanctuary where luxury and nature intertwine. Each ripple reflects the beauty around you, making every swim a moment of reflection, inspiration, and connection to the life you've imagined.





STEP INTO A LIFE IN FULL BLOOM

At SAMANA Imperial Garden, magic isn't just in the surroundings - it's in the way life unfolds within them. Each day greets you with a sense of wonder, where sunsets linger like a personal celebration, where every moment feels elevated, and where your home becomes a canvas for dreams, growth, and endless possibilities waiting to be embraced.

YOUR PRIVATE PARADISE UNVEILED

Every corner of SAMANA Imperial Garden is a sanctuary for the soul. Sun-drenched balconies frame sweeping garden panoramas, while the first-floor amenity deck transforms everyday living into resort-style splendor. Your views inspire wonder, where Dubai's glittering skyline meets lush, vibrant gardens. Each glance becomes a moment of light, color, and pure enchantment.





A SANCTUARY OF LIGHT AND LIFE

Step into your personal Eden, where interiors exude gentle luxury and embrace you like a garden breeze. Each residence is a sanctuary, thoughtfully designed to fill every corner with golden sunlight and provide the perfect canvas for life's most cherished moments.

Soaring ceilings and expansive windows transform your home into a living gallery where Dubai's ever-changing beauty becomes your daily masterpiece, and every space whispers sophistication, serenity, and possibility.

Lobby







Bathroom



WHERE EVERY MOMENT FLOURISHES





This is where life's most precious moments unfold like petals in the morning sun, and every facility is designed to elevate your daily rhythm into something truly magical. The hammock garden invites serene afternoon reveries, while outdoor yoga pavilions let wellness blossom in harmony with nature.

Greet each dawn with tranquil yoga sessions, watch your family delight in sparkling pools, and gather under twinkling stars for cinema nights and garden feasts that create memories to last a lifetime.

















Aquatic Sanctuaries

-  Adult Swimming pool
-  Pool deck
-  Kids' pool
-  Shallow Pools / Water Beds

Wellness, Elevated

-  Outdoor Yoga & meditation zone
-  Steam/sauna
-  Jacuzzi
-  Indoor/Outdoor Gym
-  Designated Shower & Changing Room

Leisure, Perfected

-  Sunken seating
-  BBQ Area
-  Open theatre / Cinema
-  Outdoor party area/ multipurpose area
-  Indoor Leisure Zone
-  Library/Lounge
-  Hammock Garden

Mini Adventures

-  Trampoline Park
-  Kids' Play Area

Pool



Pool



Outdoor Gym



Outdoor Lounge



Open Theatre

A modern building at night with a large wooden tree sculpture and a swimming pool. The building has multiple levels with balconies and large windows. The wooden tree sculpture is a prominent feature in the foreground. The swimming pool is illuminated with blue lights. The overall scene is a high-end architectural rendering.

SAMANA
DEVELOPERS

Kids' Area





LIFE SEAMLESSLY WITHIN REACH

Arjan is a place where life finds its rhythm, with every essential within reach. From leading schools to trusted healthcare and lively retail, each element is thoughtfully placed to enrich daily living. Here, ease transforms into comfort, and ordinary moments become extraordinary.

EXPANDING HORIZONS, SHAPING SKYLINES



SAMANA IMPERIAL GARDEN

- | | | |
|-----------------------------|---------------------------|---------------------------|
| 1 SAMANA Greens | 16 California 2 by SD | 31 Rome by SD |
| 2 SAMANA Hills | 17 SAMANA Golf Views | 32 Rome 2 by SD |
| 3 SAMANA Golf Avenue | 18 SAMANA Portofino | 33 SAMANA Resorts |
| 4 SAMANA Park Views | 19 Manhattan 1 by SD | 34 SAMANA ParkVille |
| 5 SAMANA Waves | 20 Manhattan 2 by SD | 35 SAMANA Barari Avenue |
| 6 SAMANA Waves 2 | 21 SAMANA Barari Views | 36 SAMANA Hills South |
| 7 SAMANA Miami | 22 SAMANA Barari Views 2 | 37 SAMANA Hills South 2 |
| 8 Miami by SD | 23 SAMANA Lake Views | 38 SAMANA SkyViews |
| 9 SAMANA Santorini | 24 SAMANA Lake Views 2 | 39 SAMANA Business Park |
| 10 SAMANA Mykonos | 25 SAMANA Avenue | 40 SAMANA Barari Heights |
| 11 SAMANA Mykonos Signature | 26 Ocean Pearl by SD | 41 Ocean Bay by SAMANA |
| 12 SAMANA Ivy Gardens | 27 Ocean Pearl 2 by SD | 42 Ocean Crest by SAMANA |
| 13 SAMANA Ivy Gardens 2 | 28 SAMANA Park Meadows | 43 SAMANA Imperial Garden |
| 14 SAMANA Skyros | 29 SAMANA Ibiza | |
| 15 California by SD | 30 SAMANA Bararai Lagoons | |



AT THE HEART OF IT ALL

Situated at the intersection of Sheikh Mohammed Bin Zayed Road (E311) and Umm Suqeim Road (D63), Arjan enjoys unmatched connectivity across Dubai. Just minutes from thriving neighborhoods like JVC, Motor City, and Al Barsha South, the community places residents at the heart of the city's growth corridor.

0 to 10 minutes

Dubai Miracle Garden
Butterfly Garden
City Centre Al Barsha
Dubai International Stadium
Circle Mall, JVC
City Centre Me'aisem

10 to 20 minutes

Al Sufouh Beach
Dubai Marina
Downtown Dubai
Mall of the Emirates
Ibn Batuta Mall

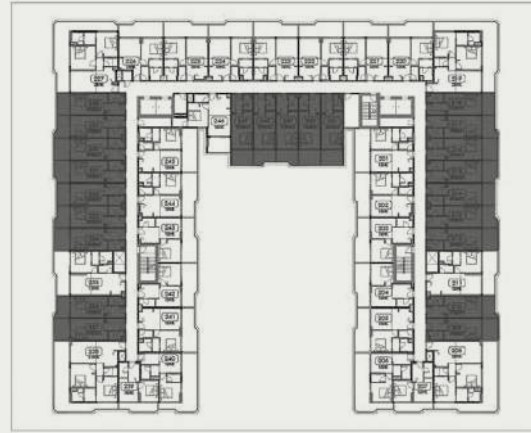
20 to 30 minutes

Dubai International Airport
Al Maktoum Airport



UNIT PLANS

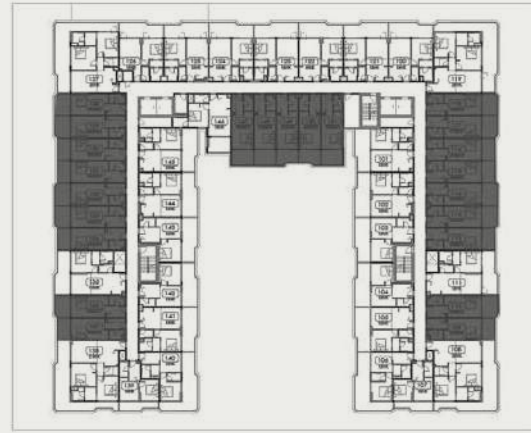
STUDIO + POOL (TYPE 1)



2nd, 4th, & 6th Typical Floor

UNITS

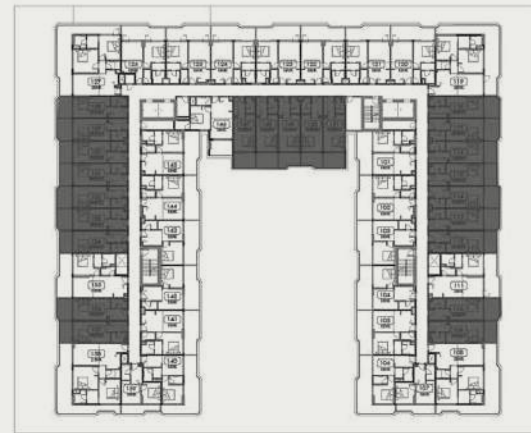
209, 210, 212, 213, 214, 215, 216, 217, 218, 228,
229, 230, 231, 232, 233, 234, 236, 237, 247, 248,
249, 250, 251, 409, 410, 412, 413, 414, 415, 416,
417, 418, 428, 429, 430, 431, 432, 433, 434, 436,
437, 447, 448, 449, 450, 451, 609, 610, 612, 613,
614, 615, 616, 617, 618, 628, 629, 630, 631, 632,
633, 634, 636, 637, 647, 648, 649, 650, 651



1st, 3rd, & 5th Typical Floor

UNITS

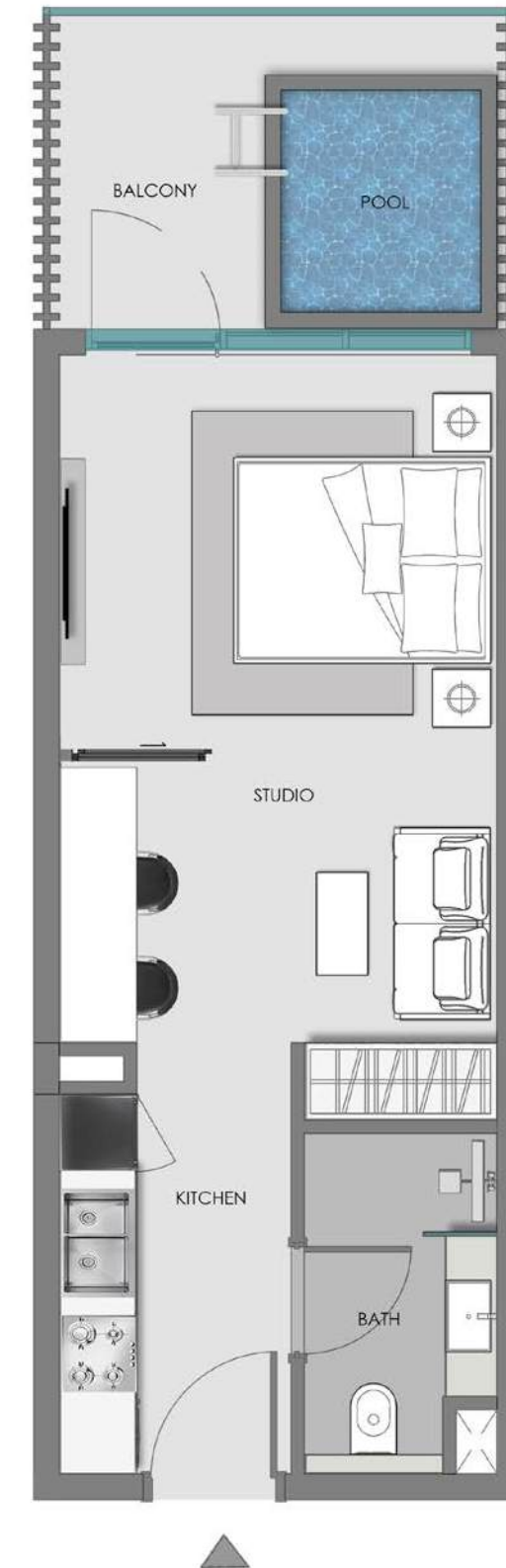
109, 110, 112, 113, 114, 115, 116, 117, 118, 128,
129, 130, 131, 132, 133, 134, 136, 137, 147, 148,
149, 150, 151, 309, 310, 312, 313, 314, 315, 316,
317, 318, 328, 329, 330, 331, 332, 333, 334, 336,
337, 347, 348, 349, 350, 351, 509, 510, 512, 513,
514, 515, 516, 517, 518, 528, 529, 530, 531, 532,
533, 534, 536, 537, 547, 548, 549, 550, 551



Ground Floor

UNITS

G09, G10, G12, G13, G14, G15,
G16, G17, G18, G21, G22, G23,
G24, G25, G26, G27, G29, G30



Disclaimer:

1. All room dimensions are measured to structural elements and exclude wall finishes and construction tolerances.
2. All dimensions have been provided by our consultant architects.
3. All materials, dimensions and drawings are approximate. Information is subject to change without notice.
4. Actual suite area may vary from the stated area. Drawings not to scale. The developer reserves the right to make revisions.
5. For each unit type, unit sizes and details might be slightly different. Please refer to the sales and purchase agreement for the actual size of each specific unit.
6. North direction as per the Keyplan

Features:
Convertible Units

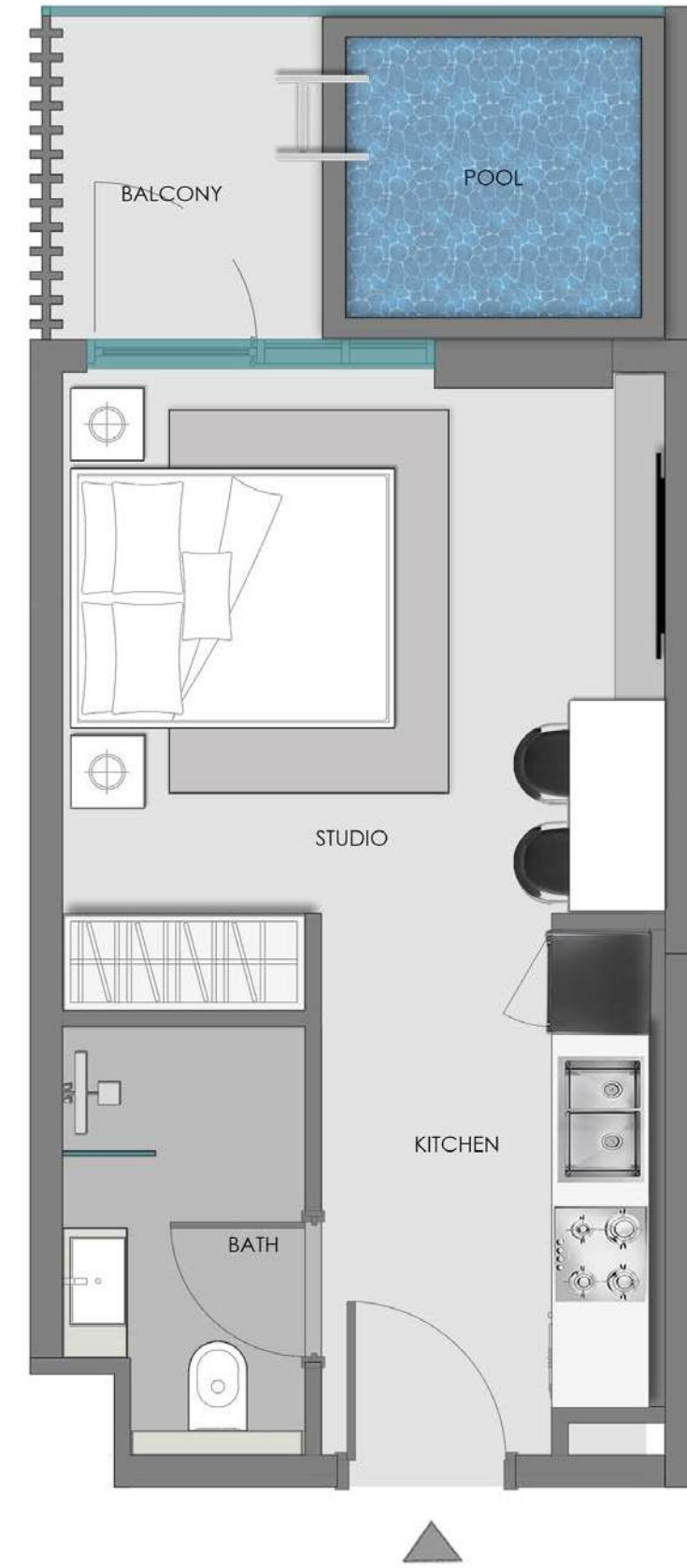


STUDIO + POOL (TYPE 2)



Ground Floor

UNITS
G04, G35

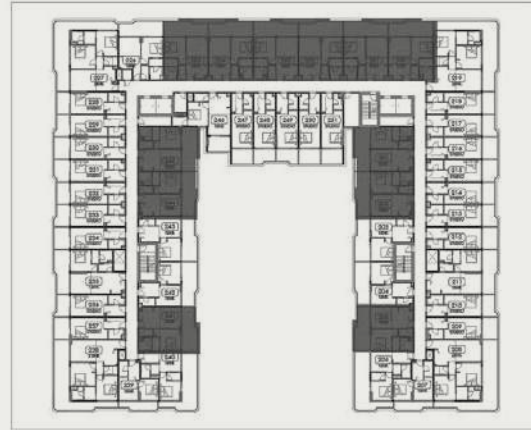


Disclaimer:

1. All room dimensions are measured to structural elements and exclude wall finishes and construction tolerances.
2. All dimensions have been provided by our consultant architects.
3. All materials, dimensions and drawings are approximate. Information is subject to change without notice.
4. Actual suite area may vary from the stated area. Drawings not to scale. The developer reserves the right to make revisions.
5. For each unit type, unit sizes and details might be slightly different. Please refer to the sales and purchase agreement for the actual size of each specific unit.
6. North direction as per the Keyplan



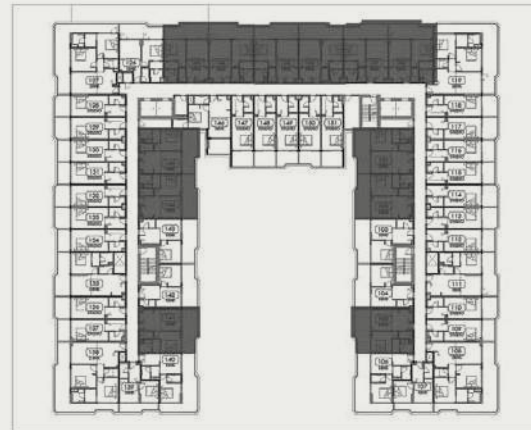
1 BEDROOM + POOL (TYPE 1)



2nd, 4th, & 6th Typical Floor

UNITS

201, 202, 205, 220, 221, 222,
223, 224, 225, 241, 244, 245,
401, 402, 405, 420, 421, 422,
423, 424, 425, 441, 444, 445,
601, 602, 605, 620, 621, 622,
623, 624, 625, 641, 644, 645



1st, 3rd, & 5th Typical Floor

UNITS

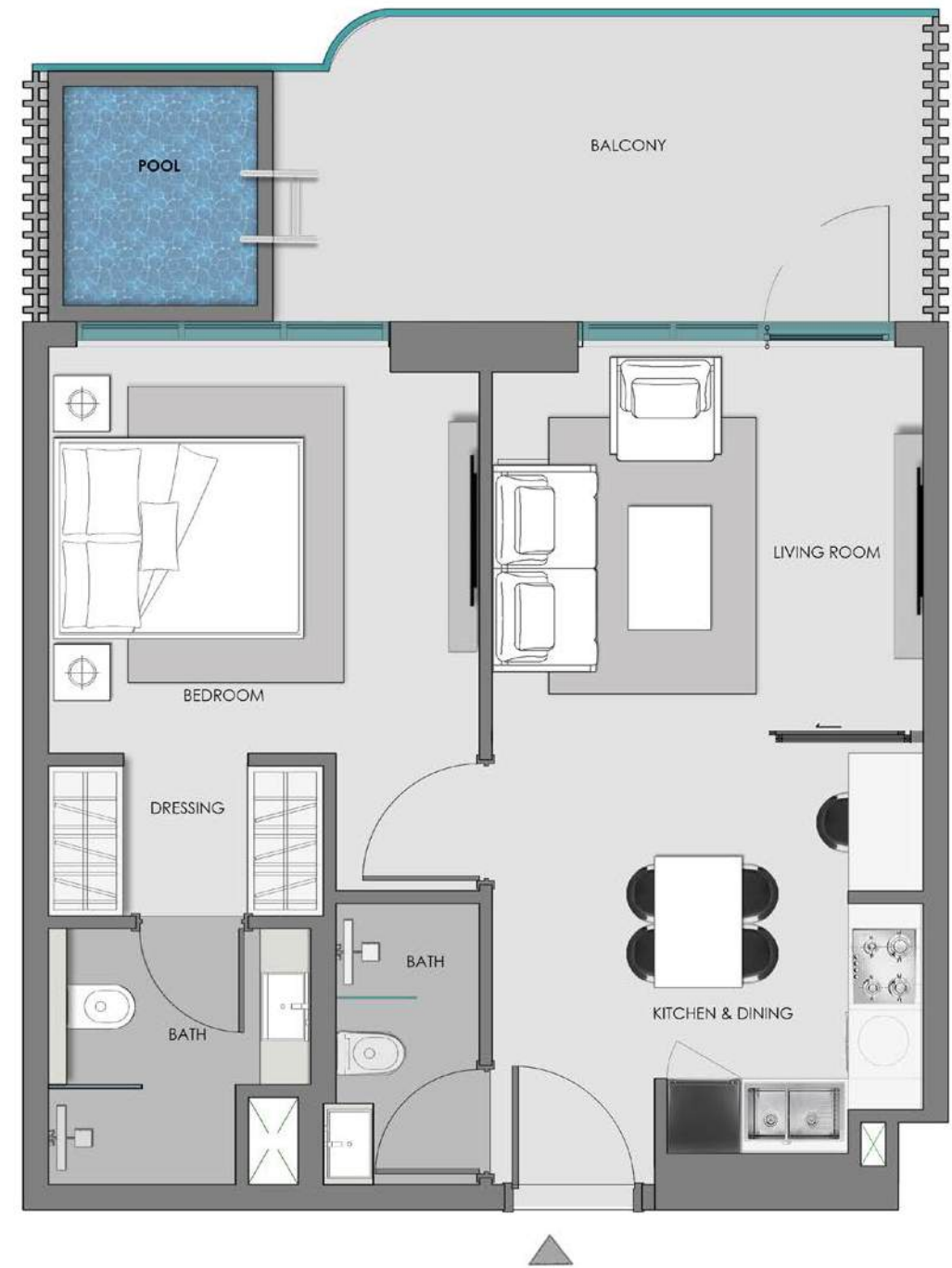
101, 102, 105, 120, 121, 122,
123, 124, 125, 141, 144, 145,
301, 302, 305, 320, 321, 322,
323, 324, 325, 341, 344, 345,
501, 502, 505, 520, 521, 522,
523, 524, 525, 541, 544, 545



Ground Floor

UNITS

G01, G02, G05, G20,
G34, G37, G38



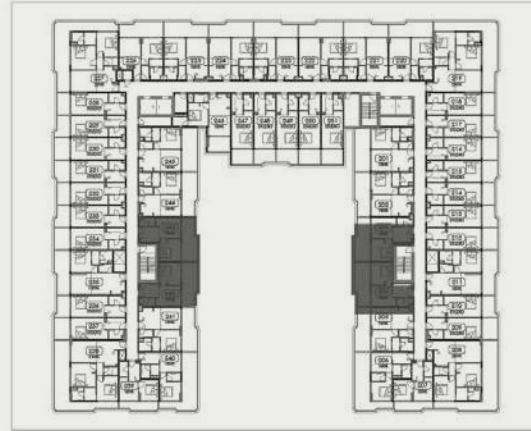
Disclaimer:

1. All room dimensions are measured to structural elements and exclude wall finishes and construction tolerances.
2. All dimensions have been provided by our consultant architects.
3. All materials, dimensions and drawings are approximate. Information is subject to change without notice.
4. Actual suite area may vary from the stated area. Drawings not to scale. The developer reserves the right to make revisions.
5. For each unit type, unit sizes and details might be slightly different. Please refer to the sales and purchase agreement for the actual size of each specific unit.
6. North direction as per the Keyplan

Features:
Convertible Units



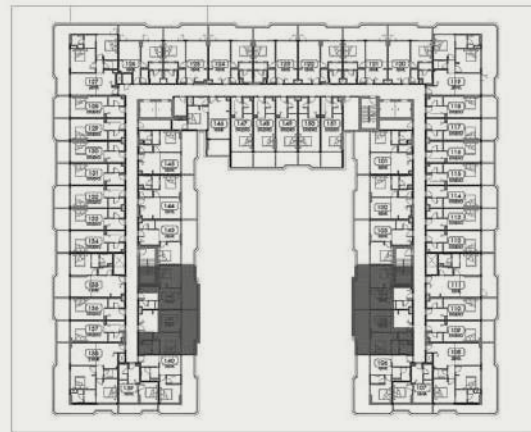
1 BEDROOM + POOL (TYPE 2)



2nd, 4th, & 6th Typical Floor

UNITS

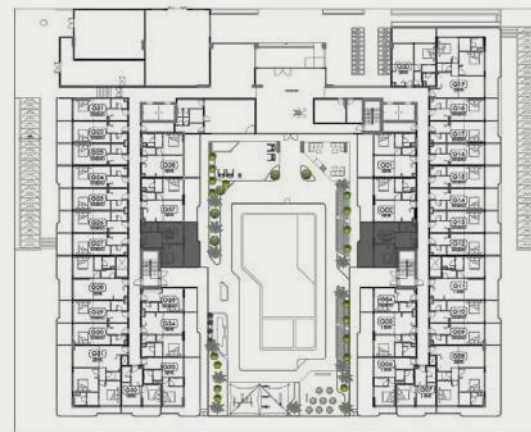
203, 204, 242, 243
403, 404, 442, 443
603, 604, 642, 643



1st, 3rd, & 5th Typical Floor

UNITS

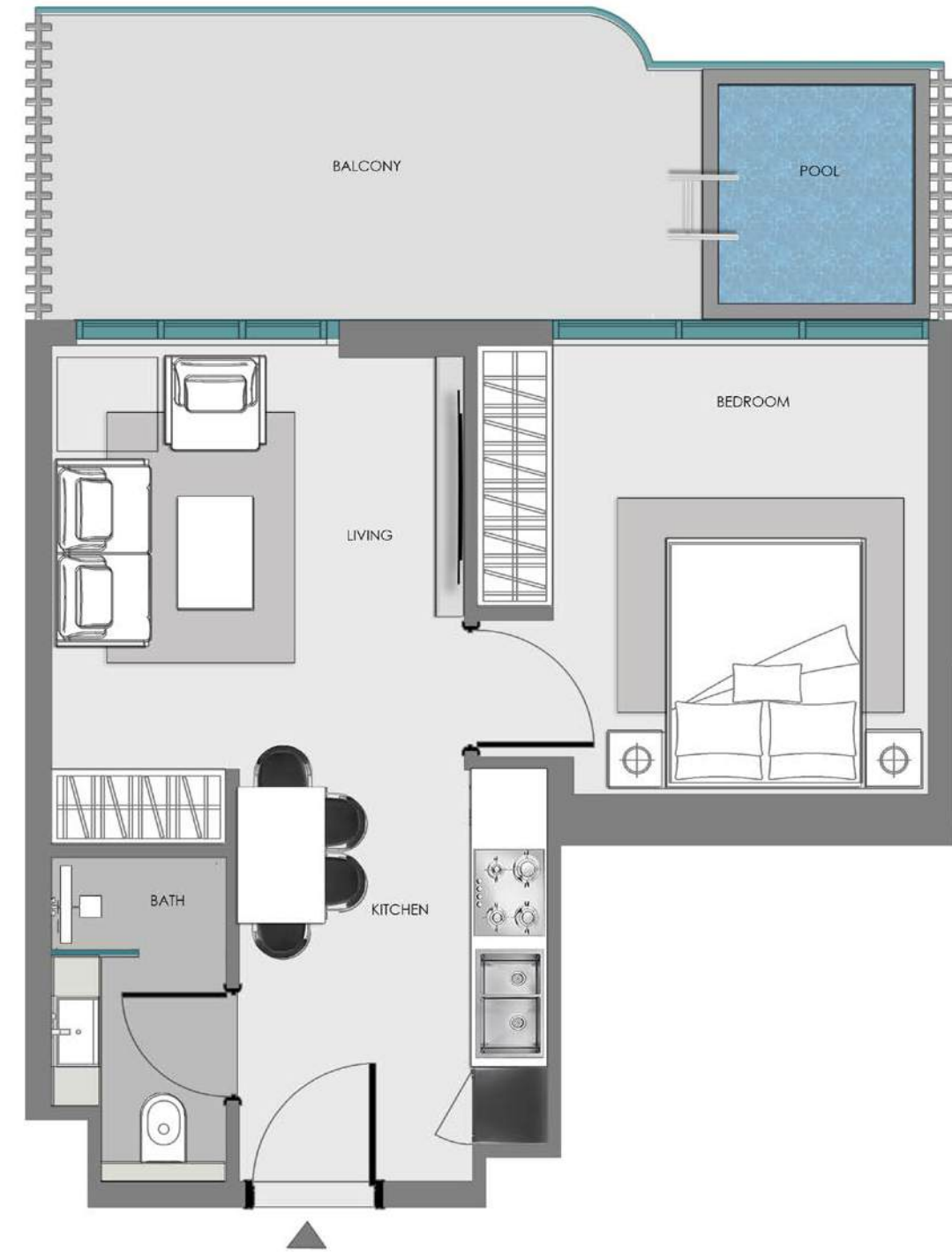
103, 104, 142, 143
303, 304, 342, 343
503, 504, 542, 543



Ground Floor

UNITS

G03, G36

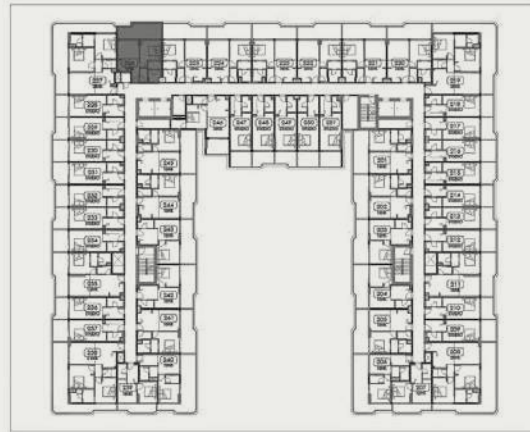


Disclaimer:

1. All room dimensions are measured to structural elements and exclude wall finishes and construction tolerances.
2. All dimensions have been provided by our consultant architects.
3. All materials, dimensions and drawings are approximate. Information is subject to change without notice.
4. Actual suite area may vary from the stated area. Drawings not to scale. The developer reserves the right to make revisions.
5. For each unit type, unit sizes and details might be slightly different. Please refer to the sales and purchase agreement for the actual size of each specific unit.
6. North direction as per the Keyplan



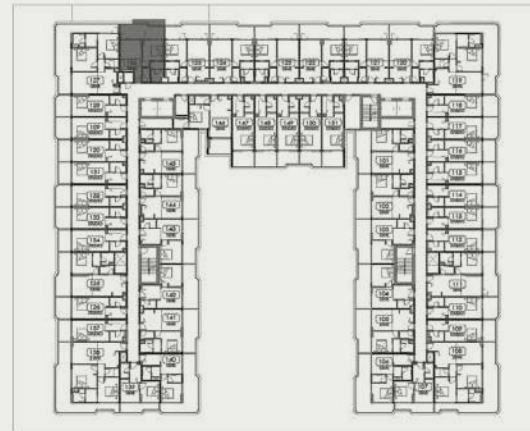
1 BEDROOM + POOL (TYPE 3)



2nd, 4th, & 6th Typical Floor

UNITS

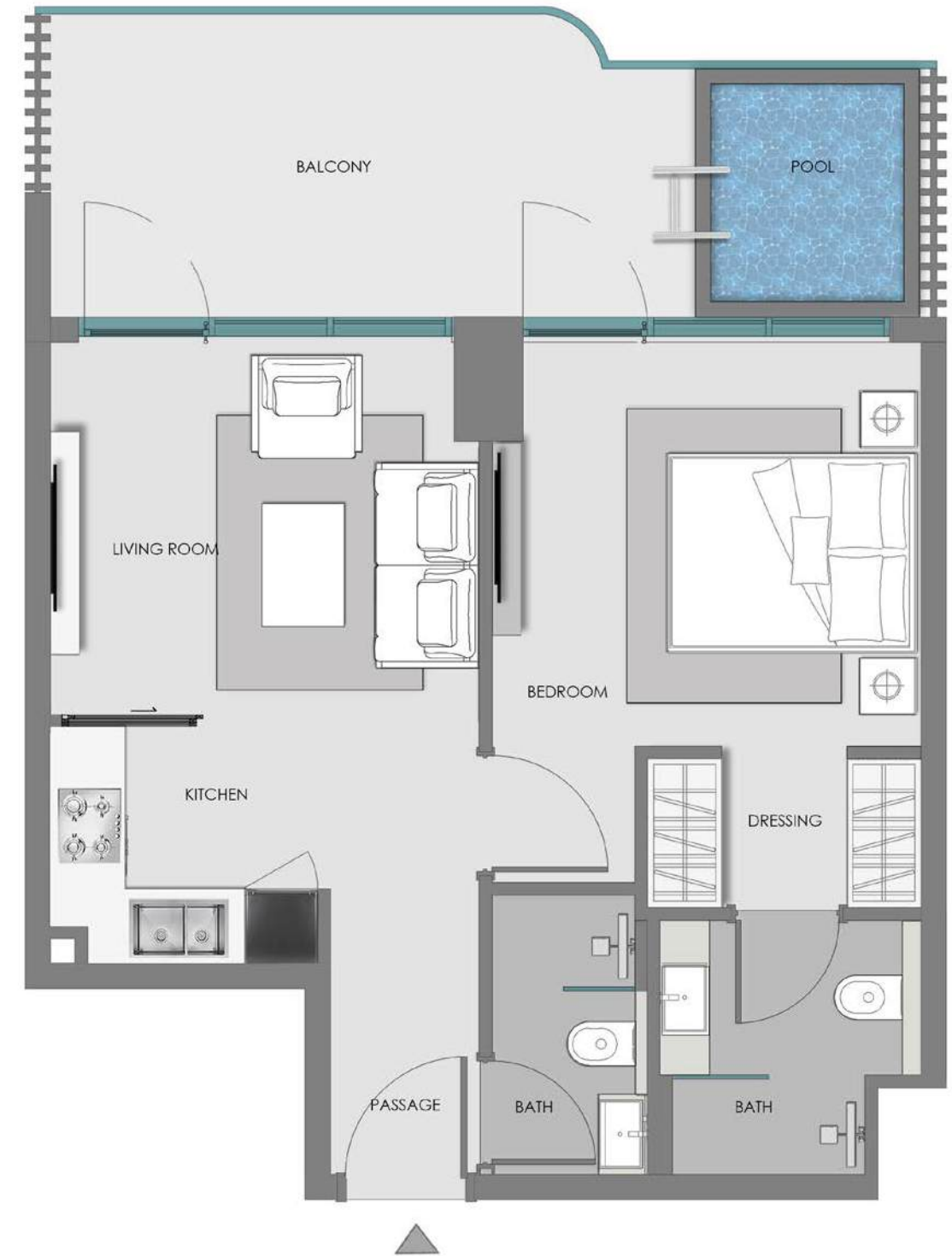
226, 426, 626



1st, 3rd, & 5th Typical Floor

UNITS

126, 326, 526



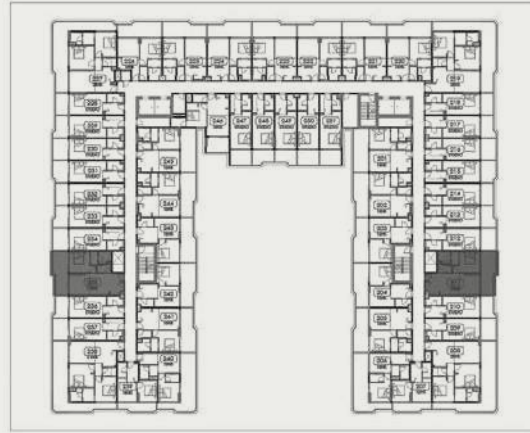
Disclaimer:

1. All room dimensions are measured to structural elements and exclude wall finishes and construction tolerances.
2. All dimensions have been provided by our consultant architects.
3. All materials, dimensions and drawings are approximate. Information is subject to change without notice.
4. Actual suite area may vary from the stated area. Drawings not to scale. The developer reserves the right to make revisions.
5. For each unit type, unit sizes and details might be slightly different. Please refer to the sales and purchase agreement for the actual size of each specific unit.
6. North direction as per the Keyplan

Features:
Convertible Units

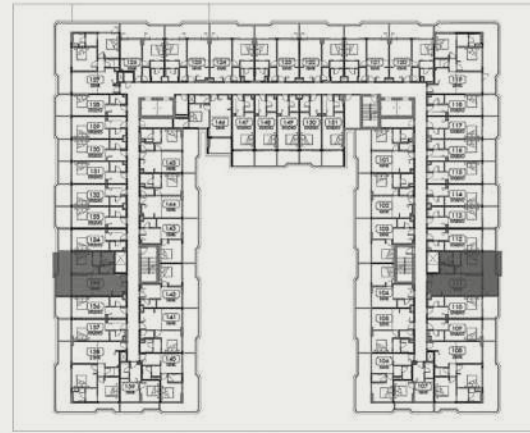


1 BEDROOM + POOL (TYPE 4)



2nd, 4th, & 6th Typical Floor

- UNITS
 235, 211
 435, 411
 635, 611



1st, 3rd, & 5th Typical Floor

- UNITS
 135, 111,
 335, 311,
 535, 511



Ground Floor

- UNITS
 G28, G11



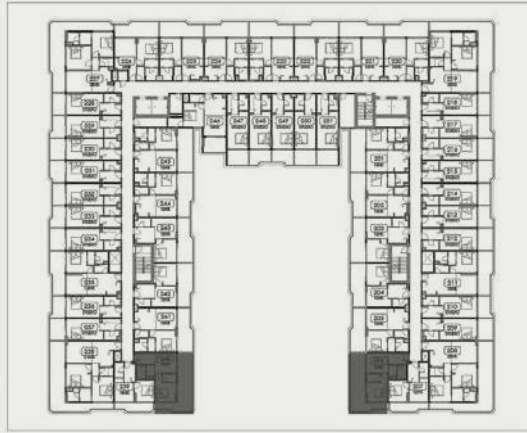
Disclaimer:

1. All room dimensions are measured to structural elements and exclude wall finishes and construction tolerances.
2. All dimensions have been provided by our consultant architects.
3. All materials, dimensions and drawings are approximate. Information is subject to change without notice.
4. Actual suite area may vary from the stated area. Drawings not to scale. The developer reserves the right to make revisions.
5. For each unit type, unit sizes and details might be slightly different. Please refer to the sales and purchase agreement for the actual size of each specific unit.
6. North direction as per the Keyplan

Features:
 Convertible Units



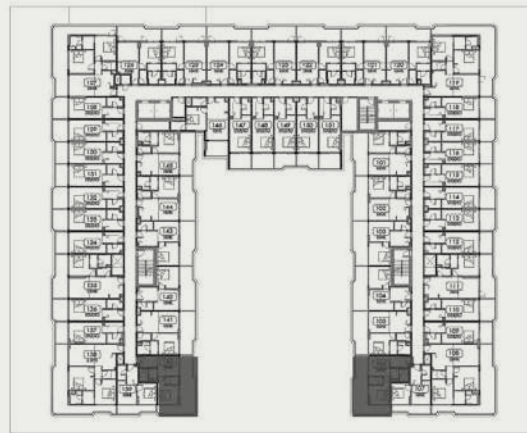
1 BEDROOM + POOL (TYPE 5)



2nd, 4th, & 6th Typical Floor

UNITS

- 235, 211,
- 435, 411,
- 635, 611



1st, 3rd, & 5th Typical Floor

UNITS

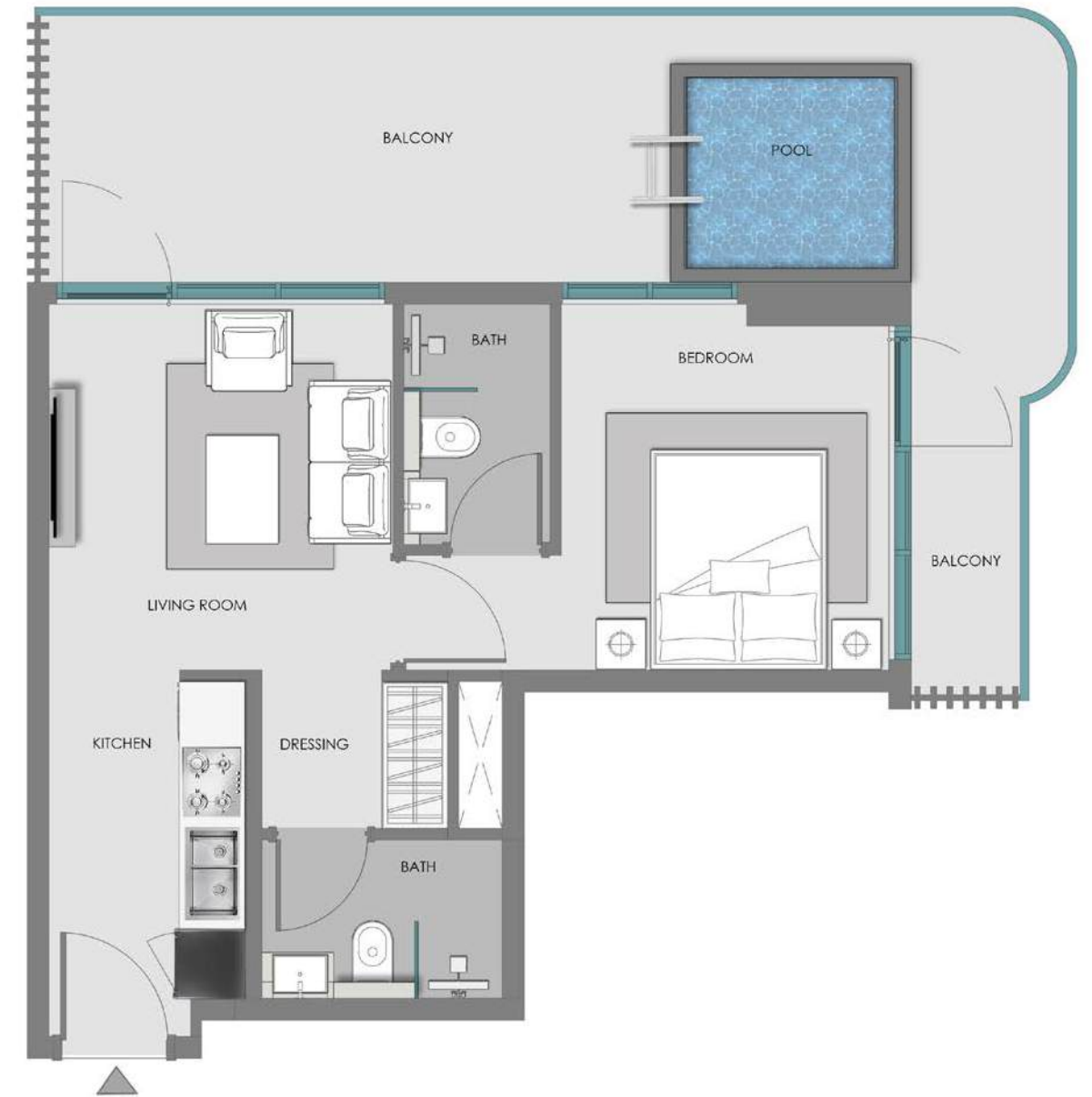
- 135, 111,
- 335, 311,
- 535, 511



Ground Floor

UNITS

- G28, G11



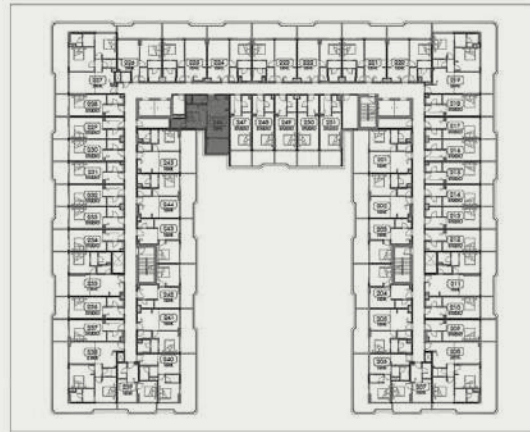
Disclaimer:

1. All room dimensions are measured to structural elements and exclude wall finishes and construction tolerances.
2. All dimensions have been provided by our consultant architects.
3. All materials, dimensions and drawings are approximate. Information is subject to change without notice.
4. Actual suite area may vary from the stated area. Drawings not to scale. The developer reserves the right to make revisions.
5. For each unit type, unit sizes and details might be slightly different. Please refer to the sales and purchase agreement for the actual size of each specific unit.
6. North direction as per the Keyplan

Features:
Convertible Units

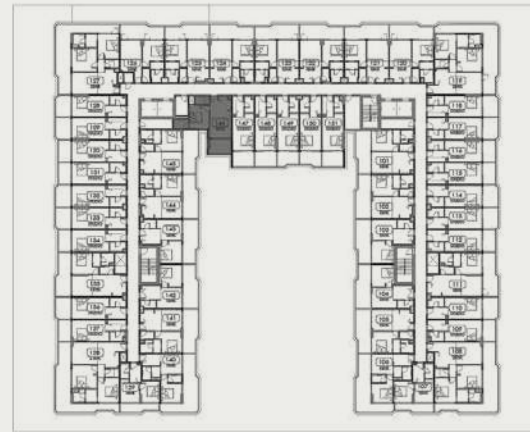


1 BEDROOM + POOL (TYPE 6)



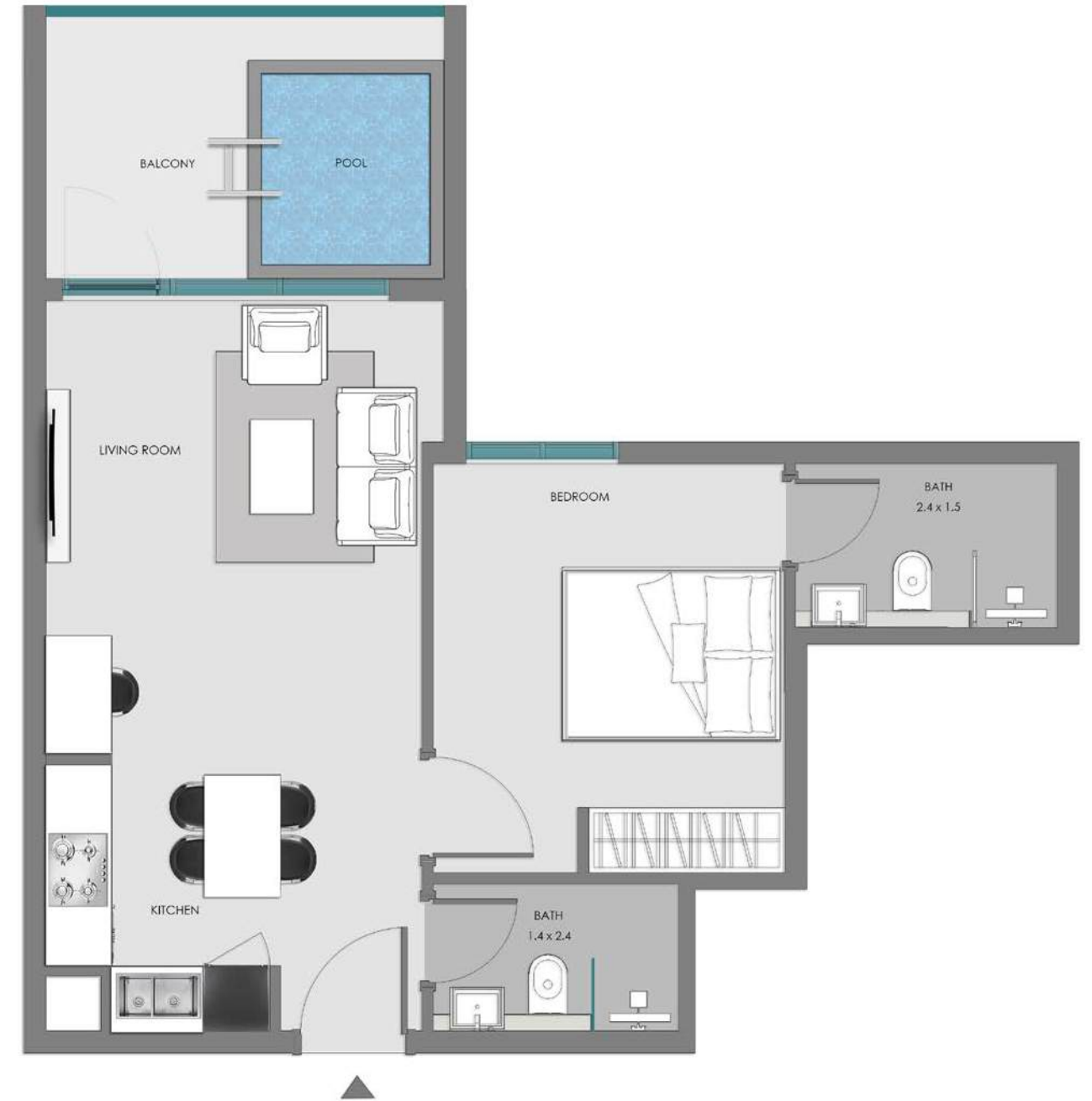
2nd, 4th, & 6th Typical Floor

UNITS
246, 464, 646



1st, 3rd, & 5th Typical Floor

UNITS
146, 346, 546

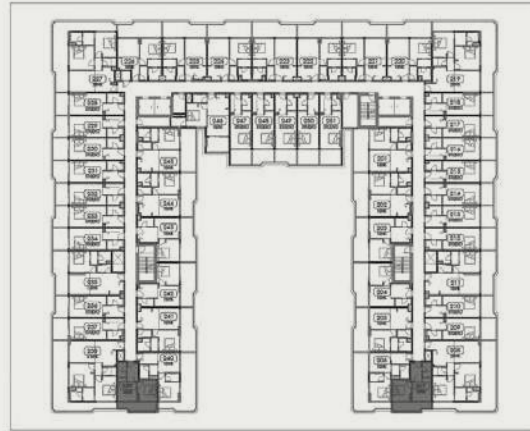


Disclaimer:

1. All room dimensions are measured to structural elements and exclude wall finishes and construction tolerances.
2. All dimensions have been provided by our consultant architects.
3. All materials, dimensions and drawings are approximate. Information is subject to change without notice.
4. Actual suite area may vary from the stated area. Drawings not to scale. The developer reserves the right to make revisions.
5. For each unit type, unit sizes and details might be slightly different. Please refer to the sales and purchase agreement for the actual size of each specific unit.
6. North direction as per the Keyplan



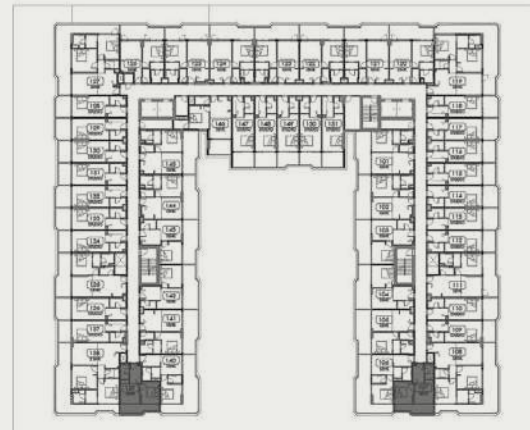
1 BEDROOM (TYPE 7)



2nd, 4th, & 6th Typical Floor

UNITS

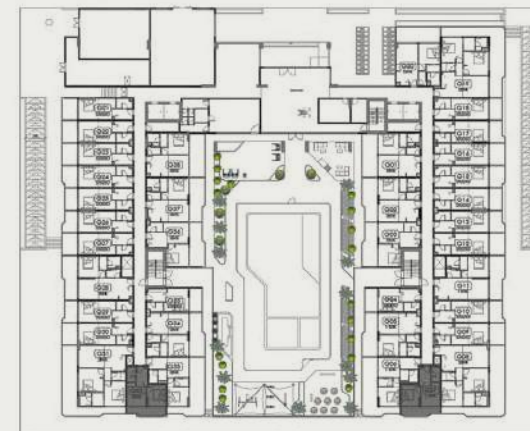
207, 239, 407, 439, 607, 639



1st, 3rd, & 5th Typical Floor

UNITS

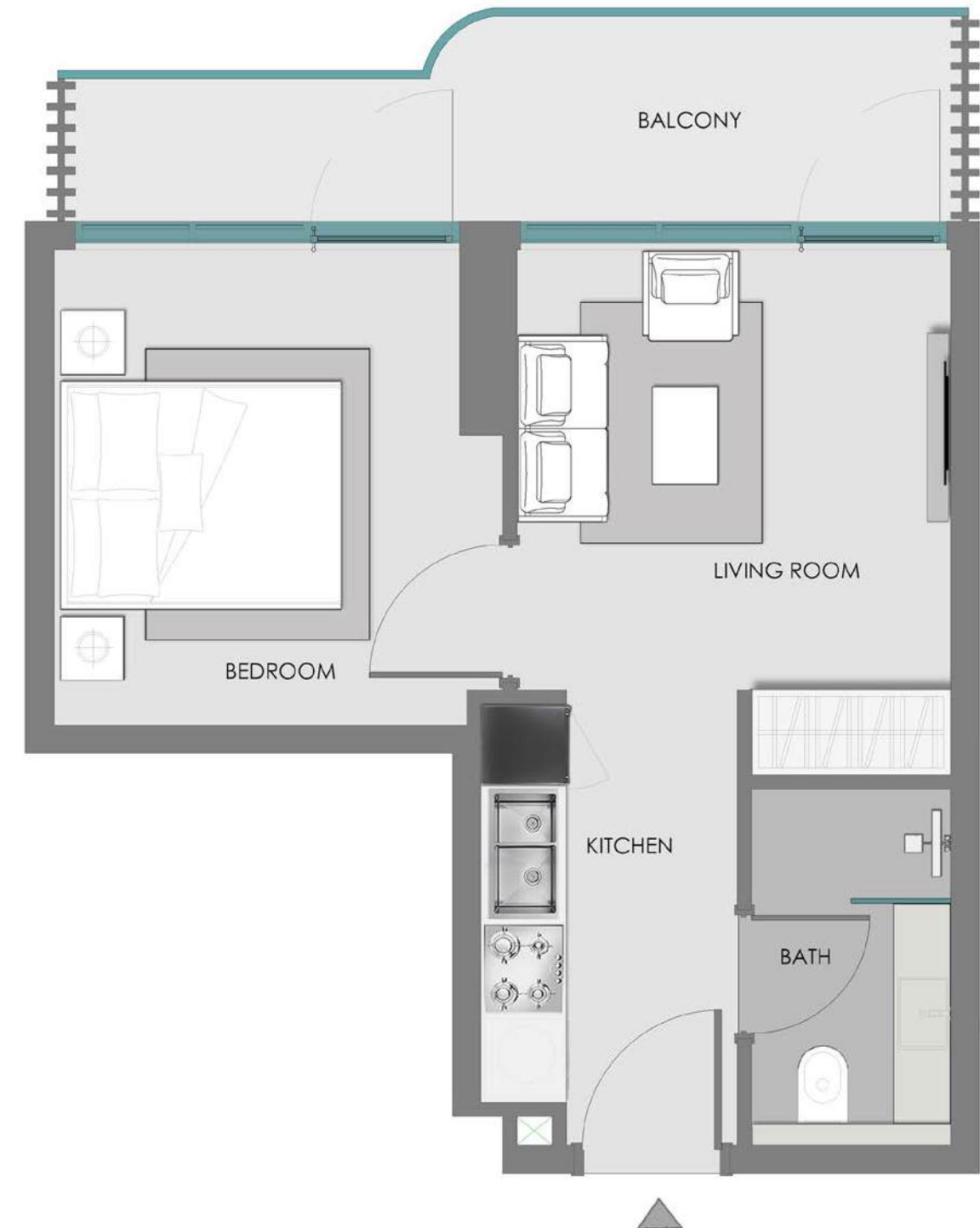
107, 139, 307, 339, 507, 539



Ground Floor

UNITS

G07, G32

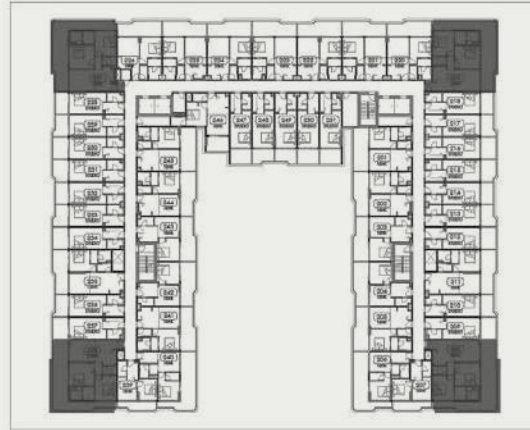


Disclaimer:

1. All room dimensions are measured to structural elements and exclude wall finishes and construction tolerances.
2. All dimensions have been provided by our consultant architects.
3. All materials, dimensions and drawings are approximate. Information is subject to change without notice.
4. Actual suite area may vary from the stated area. Drawings not to scale. The developer reserves the right to make revisions.
5. For each unit type, unit sizes and details might be slightly different. Please refer to the sales and purchase agreement for the actual size of each specific unit.
6. North direction as per the Keyplan



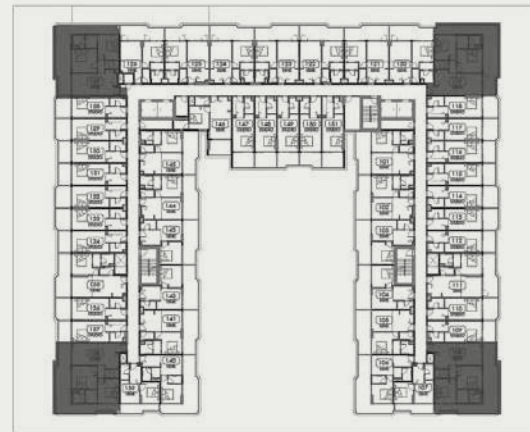
2 BEDROOM + POOL



2nd, 4th, & 6th Typical Floor

UNITS

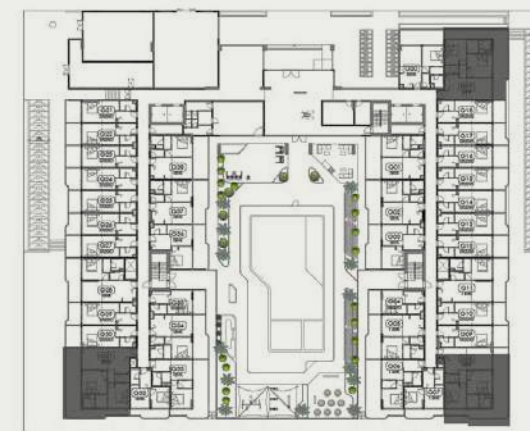
208, 219, 227, 238,
408, 419, 427, 438
608, 619, 627, 638



1st, 3rd, & 5th Typical Floor

UNITS

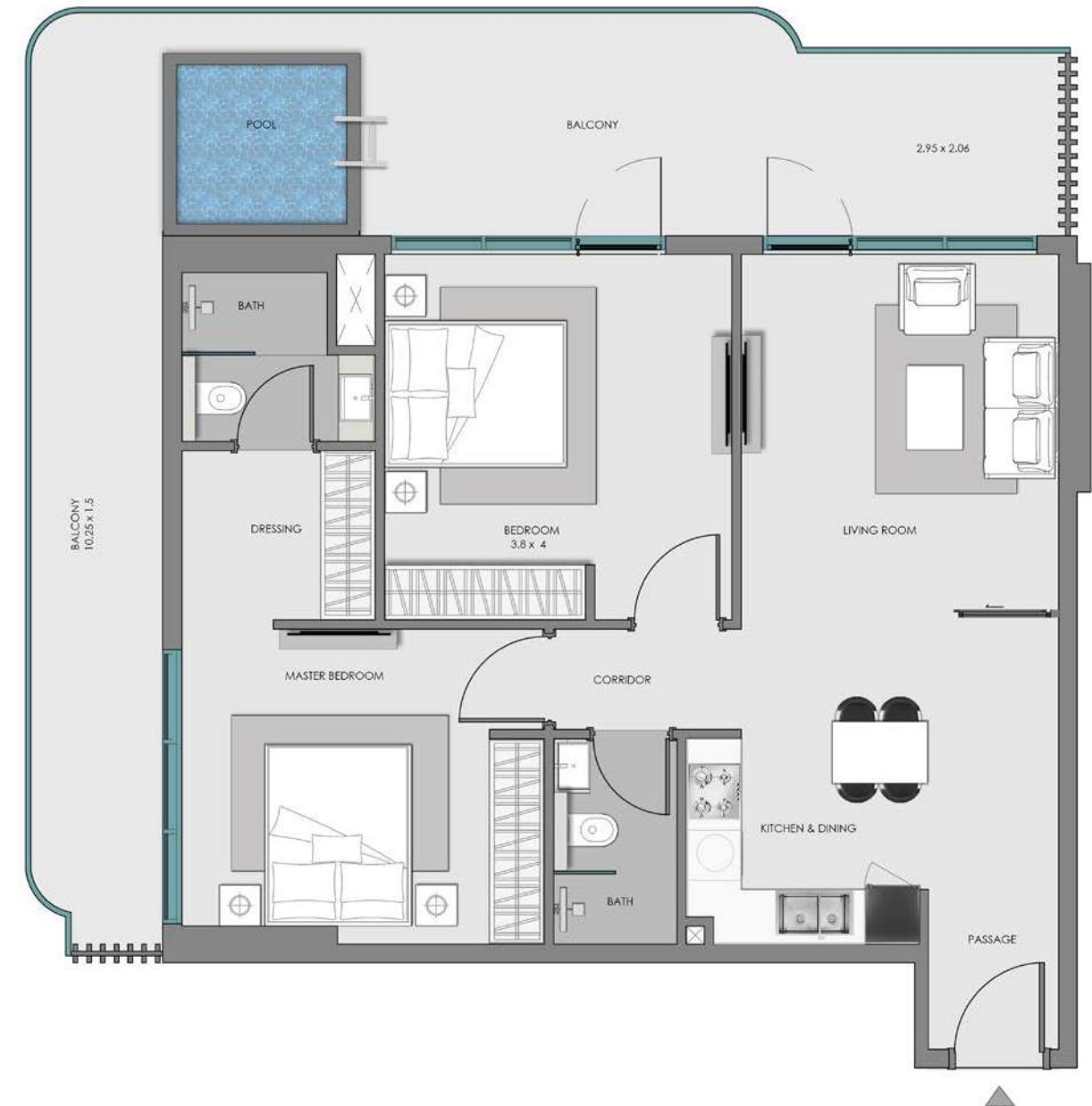
108, 119, 127, 138
308, 319, 327, 338
508, 519, 527, 538



Ground Floor

UNITS

G08, G19, G31



Disclaimer:

1. All room dimensions are measured to structural elements and exclude wall finishes and construction tolerances.
2. All dimensions have been provided by our consultant architects.
3. All materials, dimensions and drawings are approximate. Information is subject to change without notice.
4. Actual suite area may vary from the stated area. Drawings not to scale. The developer reserves the right to make revisions.
5. For each unit type, unit sizes and details might be slightly different. Please refer to the sales and purchase agreement for the actual size of each specific unit.
6. North direction as per the Keyplan

Features:
Convertible Units



SAMANA

DEVELOPERS

800-SAMANA

info@samanadevelopers.com

www.samanadevelopers.com